

# 6.5.2(2)

## Feedback Collected and Analysis and Action taken Report



**Bapatla Women's Engineering College**

BAPATLA-522101.Bapatla (Dist), A.P.

(Sponsored by The Bapatla Education Society)

*Approved by AICTE-NewDelhi, Affiliated to Acharya Nagarjuna University*

An ISO 9001:2015 Certified Institution

## FEEDBACK ON FACILITIES

Name: M. Bhavani

Contact No: 8639735995

	✓		
Student	Teacher	Parent	Alumni

Scale	1	2	3	4	5
Descriptions	poor	Satisfactory	Good	Very Good	Excellent

S. No	How would you rate the following?	Rating				
		1	2	3	4	5
1	Classrooms			✓		
2	Laboratories					✓
3	Wi-Fi and Internet Facilities			✓		
4	Sports Facilities			✓		
5	Drinking Water Facility				✓	
6	Washroom Cleanliness & Maintenance		✓			
7	Cafeteria			✓		
8	Library Facilities			✓		
9	Transportation			✓		
10	Overall Maintenance & Environment of the Campus					✓

  
PRINCIPAL

  
SIGNATURE



## FEEDBACK ON FACILITIES

Name: D. Rajasub

Contact No: 95 819512 01

	✓		
Student	Teacher	Parent	Alumni

Scale	1	2	3	4	5
Descriptions	poor	Satisfactory	Good	Very Good	Excellent

S. No	How would you rate the following?	Rating				
		1	2	3	4	5
1	Classrooms				✓	
2	Laboratories				✓	
3	Wi-Fi and Internet Facilities			✓		
4	Sports Facilities			✓		
5	Drinking Water Facility				✓	
6	Washroom Cleanliness & Maintenance			✓		
7	Cafeteria		✓			
8	Library Facilities				✓	
9	Transportation		✓			
10	Overall Maintenance & Environment of the Campus				✓	

  
PRINCIPAL

  
SIGNATURE

## FEEDBACK ON FACILITIES

Name: P. Narayana Bharan

Contact No: 8686887045

	✓		
Student	Teacher	Parent	Alumni

Scale	1	2	3	4	5
Descriptions	poor	Satisfactory	Good	Very Good	Excellent

S. No	How would you rate the following?	Rating				
		1	2	3	4	5
1	Classrooms					✓
2	Laboratories				✓	
3	Wi-Fi and Internet Facilities			✓		
4	Sports Facilities			✓		
5	Drinking Water Facility				✓	
6	Washroom Cleanliness & Maintenance				✓	
7	Cafeteria			✓		
8	Library Facilities				✓	
9	Transportation				✓	
10	Overall Maintenance & Environment of the Campus				✓	

  
PRINCIPAL

  
SIGNATURE

## FEEDBACK ON FACILITIES

Name: B. Mahalakshmi

Contact No: 7569348271

	✓		
Student	Teacher	Parent	Alumni

Scale	1	2	3	4	5
Descriptions	poor	Satisfactory	Good	Very Good	Excellent

S. No	How would you rate the following?	Rating				
		1	2	3	4	5
1	Classrooms					✓
2	Laboratories					✓
3	Wi-Fi and Internet Facilities			✓		
4	Sports Facilities					✓
5	Drinking Water Facility					✓
6	Washroom Cleanliness & Maintenance				✓	
7	Cafeteria			✓		
8	Library Facilities			✓		
9	Transportation		✓			
10	Overall Maintenance & Environment of the Campus					✓

  
PRINCIPAL

  
SIGNATURE



## FEEDBACK ON FACILITIES

Name: P. Naga Lakshmi

Contact No: 9246467804

	✓		
Student	Teacher	Parent	Alumni

Scale	1	2	3	4	5
Descriptions	poor	Satisfactory	Good	Very Good	Excellent

S. No	How would you rate the following?	Rating				
		1	2	3	4	5
1	Classrooms					✓
2	Laboratories					✓
3	Wi-Fi and Internet Facilities				✓	
4	Sports Facilities			✓		
5	Drinking Water Facility			✓		
6	Washroom Cleanliness & Maintenance		✓			
7	Cafeteria			✓		
8	Library Facilities				✓	
9	Transportation			✓		
10	Overall Maintenance & Environment of the Campus				✓	

  
PRINCIPAL

  
SIGNATURE

## FEEDBACK ON FACILITIES

Name: B. Harshitha

Contact No: 7995791374

✓			
Student	Teacher	Parent	Alumni

Scale	1	2	3	4	5
Descriptions	poor	Satisfactory	Good	Very Good	Excellent

S. No	How would you rate the following?	Rating				
		1	2	3	4	5
1	Classrooms			✓		
2	Laboratories				✓	
3	Wi-Fi and Internet Facilities			✓		
4	Sports Facilities			✓		
5	Drinking Water Facility				✓	
6	Washroom Cleanliness & Maintenance				✓	
7	Cafeteria			✓		
8	Library Facilities					✓
9	Transportation					✓
10	Overall Maintenance & Environment of the Campus					✓

  
**PRINCIPAL**

  
**SIGNATURE**

## FEEDBACK ON FACILITIES

Name: G. Osha

Contact No: +91-8309875083

✓			
<b>Student</b>	<b>Teacher</b>	<b>Parent</b>	<b>Alumni</b>

<b>Scale</b>	1	2	3	4	5
<b>Descriptions</b>	poor	Satisfactory	Good	Very Good	Excellent

S. No	How would you rate the following?	Rating				
		1	2	3	4	5
1	Classrooms				✓	
2	Laboratories				✓	
3	Wi-Fi and Internet Facilities		✓			
4	Sports Facilities		✓			
5	Drinking Water Facility				✓	
6	Washroom Cleanliness & Maintenance					✓
7	Cafeteria			✓		
8	Library Facilities				✓	
9	Transportation					✓
10	Overall Maintenance & Environment of the Campus					✓

  
**PRINCIPAL**

  
**SIGNATURE**



## FEEDBACK ON FACILITIES

Name: *K. Srijotha*

Contact No: *9391503079*

✓			
<b>Student</b>	<b>Teacher</b>	<b>Parent</b>	<b>Alumni</b>

<b>Scale</b>	1	2	3	4	5
<b>Descriptions</b>	<b>poor</b>	<b>Satisfactory</b>	<b>Good</b>	<b>Very Good</b>	<b>Excellent</b>

S. No	How would you rate the following?	Rating				
		1	2	3	4	5
1	Classrooms				✓	
2	Laboratories				✓	
3	Wi-Fi and Internet Facilities			✓		
4	Sports Facilities				✓	
5	Drinking Water Facility				✓	
6	Washroom Cleanliness & Maintenance				✓	
7	Cafeteria				✓	
8	Library Facilities				✓	
9	Transportation				✓	
10	Overall Maintenance & Environment of the Campus				✓	

*K. Srijotha*  
**PRINCIPAL**

*K. Srijotha*  
**SIGNATURE**

## FEEDBACK ON FACILITIES

Name: M. Deekshitha

Contact No: 7330989780

✓			
Student	Teacher	Parent	Alumni

Scale	1	2	3	4	5
Descriptions	poor	Satisfactory	Good	Very Good	Excellent

S. No	How would you rate the following?	Rating				
		1	2	3	4	5
1	Classrooms					✓
2	Laboratories					✓
3	Wi-Fi and Internet Facilities				✓	
4	Sports Facilities				✓	
5	Drinking Water Facility					✓
6	Washroom Cleanliness & Maintenance					✓
7	Cafeteria					✓
8	Library Facilities					✓
9	Transportation					✓
10	Overall Maintenance & Environment of the Campus					✓

  
PRINCIPAL

M. Deekshitha  
SIGNATURE

## FEEDBACK ON FACILITIES

Name: J. Geethanjali

Contact No: 9550 415767

✓			
Student	Teacher	Parent	Alumni

Scale	1	2	3	4	5
Descriptions	poor	Satisfactory	Good	Very Good	Excellent

S. No	How would you rate the following?	Rating				
		1	2	3	4	5
1	Classrooms			✓		
2	Laboratories				✓	
3	Wi-Fi and Internet Facilities				✓	
4	Sports Facilities					✓
5	Drinking Water Facility					✓
6	Washroom Cleanliness & Maintenance					✓
7	Cafeteria				✓	
8	Library Facilities			✓		
9	Transportation			✓		
10	Overall Maintenance & Environment of the Campus			✓		

  
PRINCIPAL

J. Geethanjali  
SIGNATURE



## FEEDBACK ON FACILITIES

Name: J. Venkaiah

Contact No: 9866417064

Student	Teacher	Parent	Alumni

Scale	1	2	3	4	5
Descriptions	poor	Satisfactory	Good	Very Good	Excellent

S. No	How would you rate the following?	Rating				
		1	2	3	4	5
1	Classrooms			/		
2	Laboratories				/	
3	Wi-Fi and Internet Facilities				/	
4	Sports Facilities					/
5	Drinking Water Facility					/
6	Washroom Cleanliness & Maintenance			/		+
7	Cafeteria			/		
8	Library Facilities					/
9	Transportation			/		
10	Overall Maintenance & Environment of the Campus			/		

  
 PRINCIPAL

J. Venkaiah  
 SIGNATURE

## FEEDBACK ON FACILITIES

Name: M. Srinivasa Rao

Contact No: 9441819790

		✓	
Student	Teacher	Parent	Alumni

Scale	1	2	3	4	5
Descriptions	poor	Satisfactory	Good	Very Good	Excellent

S. No	How would you rate the following?	Rating				
		1	2	3	4	5
1	Classrooms					✓
2	Laboratories					✓
3	Wi-Fi and Internet Facilities				✓	
4	Sports Facilities				✓	
5	Drinking Water Facility					✓
6	Washroom Cleanliness & Maintenance					✓
7	Cafeteria				✓	
8	Library Facilities				✓	
9	Transportation					✓
10	Overall Maintenance & Environment of the Campus					✓

  
PRINCIPAL

  
SIGNATURE

## FEEDBACK ON FACILITIES

Name: B. Sridhar

Contact No: 9010357964

		✓	
Student	Teacher	Parent	Alumni

Scale	1	2	3	4	5
Descriptions	poor	Satisfactory	Good	Very Good	Excellent

S. No	How would you rate the following?	Rating				
		1	2	3	4	5
1	Classrooms			✓		
2	Laboratories				✓	
3	Wi-Fi and Internet Facilities			✓		
4	Sports Facilities			✓		
5	Drinking Water Facility				✓	
6	Washroom Cleanliness & Maintenance			✓		
7	Cafeteria					✓
8	Library Facilities					✓
9	Transportation				✓	
10	Overall Maintenance & Environment of the Campus					✓

  
PRINCIPAL

B. Sridhar  
SIGNATURE



## FEEDBACK ON FACILITIES

Name: G. Mallikharajumath

Contact No: +91-8520719940

		✓	
Student	Teacher	Parent	Alumni

Scale	1	2	3	4	5
Descriptions	poor	Satisfactory	Good	Very Good	Excellent

S. No	How would you rate the following?	Rating				
		1	2	3	4	5
1	Classrooms					✓
2	Laboratories					✓
3	Wi-Fi and Internet Facilities		✓			
4	Sports Facilities				✓	
5	Drinking Water Facility					✓
6	Washroom Cleanliness & Maintenance					✓
7	Cafeteria				✓	
8	Library Facilities				✓	
9	Transportation				✓	
10	Overall Maintenance & Environment of the Campus					✓

  
PRINCIPAL

  
SIGNATURE

## FEEDBACK ON FACILITIES

Name: K. Soresh

Contact No: 9059987604

		<input checked="" type="checkbox"/>	
Student	Teacher	Parent	Alumni

Scale	1	2	3	4	5
Descriptions	poor	Satisfactory	Good	Very Good	Excellent

S. No	How would you rate the following?	Rating				
		1	2	3	4	5
1	Classrooms				✓	
2	Laboratories				✓	
3	Wi-Fi and Internet Facilities			✓		
4	Sports Facilities				✓	
5	Drinking Water Facility				✓	
6	Washroom Cleanliness & Maintenance			✓		
7	Cafeteria					✓
8	Library Facilities				✓	
9	Transportation				✓	
10	Overall Maintenance & Environment of the Campus					✓

  
PRINCIPAL

  
SIGNATURE

## FEEDBACK ON FACILITIES

Name: A. Sindhu (2018-22)

Contact No: 9063734544

			✓
Student	Teacher	Parent	Alumni

Scale	1	2	3	4	5
Descriptions	poor	Satisfactory	Good	Very Good	Excellent

S. No	How would you rate the following?	Rating				
		1	2	3	4	5
1	Classrooms				✓	
2	Laboratories					✓
3	Wi-Fi and Internet Facilities					✓
4	Sports Facilities				✓	
5	Drinking Water Facility					✓
6	Washroom Cleanliness & Maintenance				✓	
7	Cafeteria					✓
8	Library Facilities				✓	
9	Transportation					✓
10	Overall Maintenance & Environment of the Campus				✓	

  
PRINCIPAL

A. Sindhu  
SIGNATURE



## FEEDBACK ON FACILITIES

Name: N. Swathi Vijayalakshmi

Contact No: 86 88 733045

(2020-23)

			✓
Student	Teacher	Parent	Alumni

Scale	1	2	3	4	5
Descriptions	poor	Satisfactory	Good	Very Good	Excellent

S. No	How would you rate the following?	Rating				
		1	2	3	4	5
1	Classrooms					✓
2	Laboratories				✓	
3	Wi-Fi and Internet Facilities					✓
4	Sports Facilities					✓
5	Drinking Water Facility				✓	
6	Washroom Cleanliness & Maintenance					✓
7	Cafeteria					✓
8	Library Facilities				✓	
9	Transportation			✓		
10	Overall Maintenance & Environment of the Campus					✓

  
PRINCIPAL

N. Swathi Vijayalaksh  
SIGNATURE

## FEEDBACK ON FACILITIES

Name: K. Chandrika (19-23)

Contact No: 8555815737

			✓
Student	Teacher	Parent	Alumni

Scale	1	2	3	4	5
Descriptions	poor	Satisfactory	Good	Very Good	Excellent

S. No	How would you rate the following?	Rating				
		1	2	3	4	5
1	Classrooms					✓
2	Laboratories				✓	
3	Wi-Fi and Internet Facilities				✓	
4	Sports Facilities				✓	
5	Drinking Water Facility				✓	
6	Washroom Cleanliness & Maintenance					✓
7	Cafeteria					✓
8	Library Facilities				✓	
9	Transportation			✓		
10	Overall Maintenance & Environment of the Campus					✓

  
PRINCIPAL

K. Chandrika  
SIGNATURE

## FEEDBACK ON FACILITIES

Name: Gr. Pavani (19-23) batch

Contact No: 8 247 318071

<b>Student</b>	<b>Teacher</b>	<b>Parent</b>	<b>Alumni</b> ✓

<b>Scale</b>	1	2	3	4	5
<b>Descriptions</b>	poor	Satisfactory	Good	Very Good	Excellent

S. No	How would you rate the following?	Rating				
		1	2	3	4	5
1	Classrooms				✓	
2	Laboratories				✓	
3	Wi-Fi and Internet Facilities			✗	✓	
4	Sports Facilities				✓	
5	Drinking Water Facility					✓
6	Washroom Cleanliness & Maintenance			✓		
7	Cafeteria				✓	
8	Library Facilities					✓
9	Transportation				✓	
10	Overall Maintenance & Environment of the Campus			✓		

  
**PRINCIPAL**

Gr. Pavani  
**SIGNATURE**



## FEEDBACK ON FACILITIES

Name: K. Krishnaveni (2020-23)

Contact No: 7993 840782

			✓
Student	Teacher	Parent	Alumni

Scale	1	2	3	4	5
Descriptions	poor	Satisfactory	Good	Very Good	Excellent

S. No	How would you rate the following?	Rating				
		1	2	3	4	5
1	Classrooms				✓	
2	Laboratories					✓
3	Wi-Fi and Internet Facilities					✓
4	Sports Facilities				✓	
5	Drinking Water Facility					✓
6	Washroom Cleanliness & Maintenance					✓
7	Cafeteria					✓
8	Library Facilities				✓	
9	Transportation				✓	
10	Overall Maintenance & Environment of the Campus					✓

  
PRINCIPAL

K. Krishnaveni  
SIGNATURE

(ESTD.2009)

# Bapatla Women's Engineering College

BAPATLA-522101.Bapatla (Dist), A.P.

(Sponsored by The Bapatla Education Society)

Approved by AICTE-NewDelhi, Affiliated to Acharya Nagarjuna University

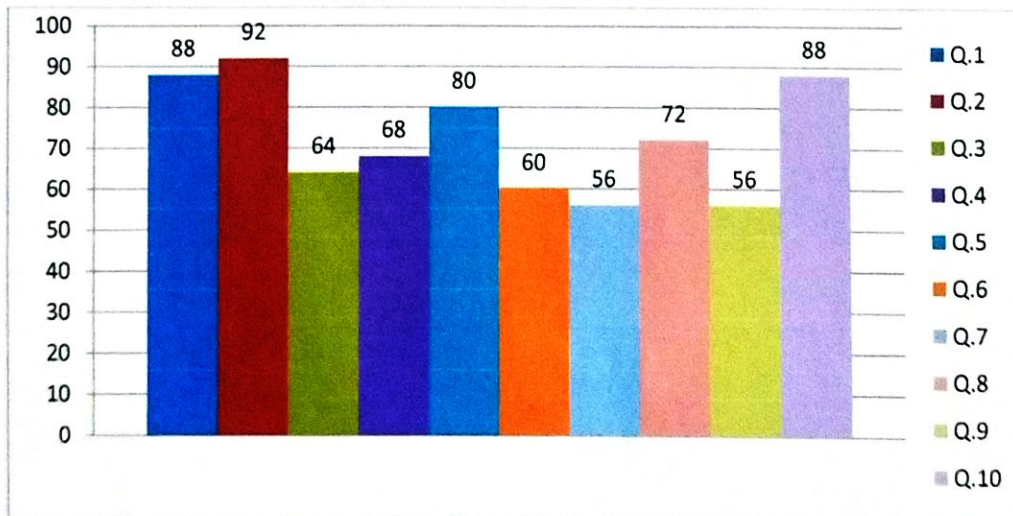
An ISO 9001:2015 Certified Institution

## FEEDBACK ON FACILITIES

Name of the Stakeholders: Staff    Academic Year: 2022-2023

S. No	Questionnaire	Feedback (%)
1	Classrooms	88
2	Laboratories	92
3	Wi-Fi and Internet Facilities	64
4	Sports Facilities	68
5	Drinking Water Facility	80
6	Washroom Cleanliness & Maintenance	60
7	Cafeteria	56
8	Library Facilities	72
9	Transportation	56
10	Overall Maintenance & Environment of the Campus	88

## FEEDBACK PERCENTAGE:



*G. Hertho*  
IQAC COORDINATOR



*[Signature]*  
PRINCIPAL

PRINCIPAL  
BAPATLA WOMEN'S ENGINEERING COLLEGE  
BAPATLA



(ESTD.2009)

# Bapatla Women's Engineering College

BAPATLA-522101.Bapatla (Dist), A.P.

(Sponsored by The Bapatla Education Society)

Approved by AICTE-NewDelhi, Affiliated to Acharya Nagarjuna University

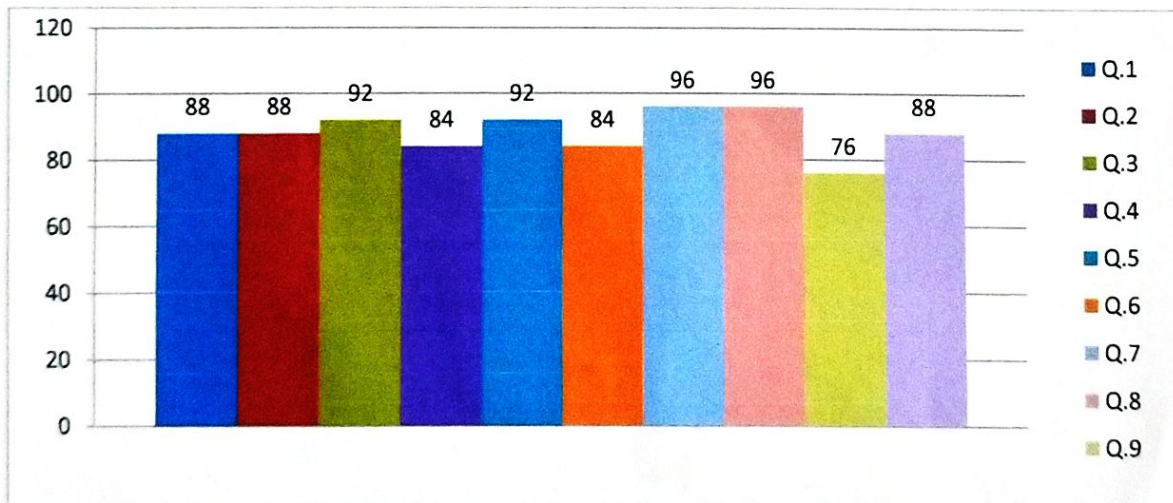
An ISO 9001:2015 Certified Institution

## FEEDBACK ON FACILITIES

Name of the Stakeholders: Student Academic Year: 2022-2023

S. No	Questionnaire	Feedback (%)
1	Classrooms	76
2	Laboratories	84
3	Wi-Fi and Internet Facilities	64
4	Sports Facilities	72
5	Drinking Water Facility	88
6	Washroom Cleanliness & Maintenance	92
7	Cafeteria	92
8	Library Facilities	84
9	Transportation	88
10	Overall Maintenance & Environment of the Campus	88

## FEEDBACK PERCENTAGE:



*G. Bhatla*  
IQAC COORDINATOR



*[Signature]*  
PRINCIPAL

PRINCIPAL  
BAPATLA WOMEN'S ENGINEERING COLLEGE  
BAPATLA



# Bapatla Women's Engineering College

BAPATLA-522101.Bapatla (Dist), A.P.

(Sponsored by The Bapatla Education Society)

Approved by AICTE-NewDelhi, Affiliated to Acharya Nagarjuna University

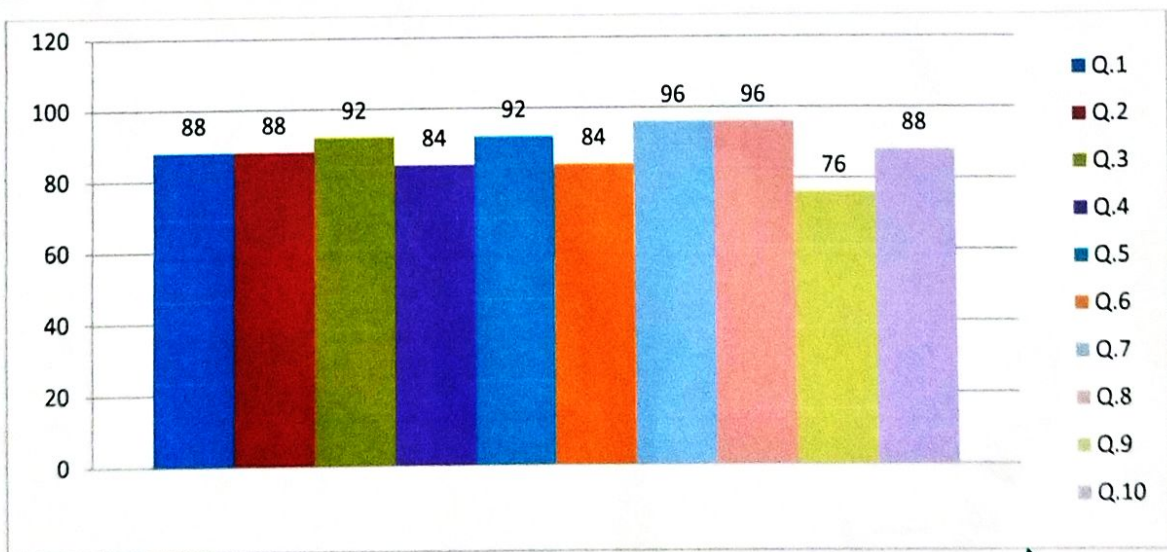
An ISO 9001:2015 Certified Institution

## FEEDBACK ON FACILITIES

Name of the Stakeholders: Parent Academic Year: 2022-2023

S. No	Questionnaire	Feedback (%)
1	Classrooms	80
2	Laboratories	88
3	Wi-Fi and Internet Facilities	68
4	Sports Facilities	80
5	Drinking Water Facility	92
6	Washroom Cleanliness & Maintenance	76
7	Cafeteria	84
8	Library Facilities	88
9	Transportation	80
10	Overall Maintenance & Environment of the Campus	92

## FEEDBACK PERCENTAGE:



*G. Hentle*  
IQAC COORDINATOR



*Principals*  
PRINCIPAL

PRINCIPAL  
BAPATLA WOMEN'S ENGINEERING COLLEGE  
BAPATLA

(ESTD.2009)

# Bapatla Women's Engineering College

BAPATLA-522101.Bapatla (Dist), A.P.

(Sponsored by The Bapatla Education Society)

Approved by AICTE-NewDelhi, Affiliated to Acharya Nagarjuna University

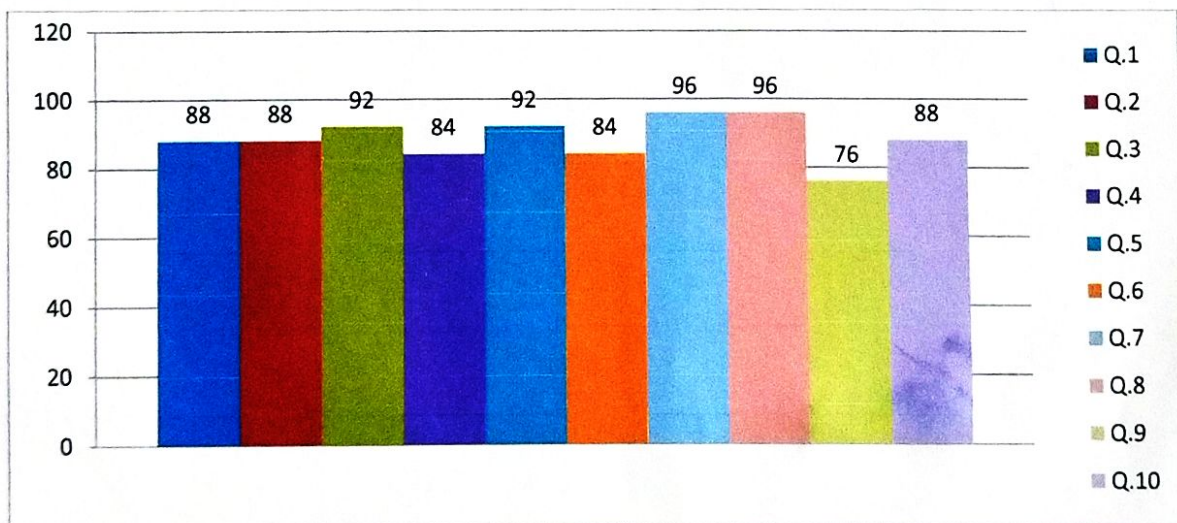
An ISO 9001:2015 Certified Institution

## FEEDBACK ON FACILITIES

Name of the Stakeholders: Alumni    Academic Year: 2022-2023

S. No	Questionnaire	Feedback (%)
1	Classrooms	88
2	Laboratories	88
3	Wi-Fi and Internet Facilities	92
4	Sports Facilities	84
5	Drinking Water Facility	92
6	Washroom Cleanliness & Maintenance	84
7	Cafeteria	96
8	Library Facilities	96
9	Transportation	76
10	Overall Maintenance & Environment of the Campus	88

## FEEDBACK PERCENTAGE:



*G. Henthala*  
IQAC COORDINATOR



*[Signature]*  
PRINCIPAL

PRINCIPAL  
BAPATLA WOMEN'S ENGINEERING COLLEGE  
BAPATLA



# Bapatla Women's Engineering College

BAPATLA-522101.Bapatla (Dist), A.P.

(Sponsored by The Bapatla Education Society)

Approved by AICTE-NewDelhi, Affiliated to Acharya Nagarjuna University

An ISO 9001:2015 Certified Institution

## Minutes of IQAC Meeting in the Academic Year 2022-2023

Name of the stake holder: STAFF

To bring the feedback analysis to their attention and ask if there was a chance for meaningful adjustments to be made to the college facilities, IQAC convened a meeting with all of the incharges and HoD's under the Head of the Institution. Staff feedback above 90% is considered positive feedback and below that is negative feedback and we are working for the environment.

S. No	Question	Percentage Consensus	Action to be Taken
1	Classrooms	88	Provision for E-learning has been included
2	Laboratories	92	Same to be continued but purchase of needed Equipments is considered
3	Wi-Fi and Internet Facilities	64	Suggestions are taken and speed of internet facility will be increased
4	Sports Facilities	68	Increasing the sports materials will be forwarded to the governing body
5	Drinking Water Facility	80	Installation of more Water purifier will be considered
6	Washroom Cleanliness & Maintenance	60	Suggestions will be considered
7	Cafeteria	56	Infrastructure of Cafeteria will be considered for Modification
8	Library Facilities	72	E-Library has been introduced
9	Transportation	56	We will try to improve the quality of Transportation
10	Overall Maintenance & Environment of the Campus	88	Still Enhancement of the maintenance will be done

  
IQAC COORDINATOR



  
PRINCIPAL

PRINCIPAL  
BAPATLA WOMEN'S ENGINEERING COLLEGE  
BAPATLA



# Bapatla Women's Engineering College

BAPATLA-522101.Bapatla (Dist), A.P.

(Sponsored by The Bapatla Education Society)

Approved by AICTE-NewDelhi, Affiliated to Acharya Nagarjuna University

An ISO 9001:2015 Certified Institution

## Minutes of IQAC Meeting in the Academic Year 2022-2023

Name of the stake holder: STUDENT

To bring the feedback analysis to their attention and ask if there was a chance for meaningful adjustments to be made to the college facilities, IQAC convened a meeting with all of the incharges and HoD's under the Head of the Institution. Student feedback above 90% is considered positive feedback and below that is negative feedback and we are working for the environment.

S. No	Question	Percentage Consensus	Action to be Taken
1	Classrooms	76	Provision for E-learning has been included
2	Laboratories	84	Same to be continued but purchase of needed Equipments is considered
3	Wi-Fi and Internet Facilities	64	Suggestions are taken and speed of internet facility will be increased
4	Sports Facilities	72	Increasing the sports materials will be forwarded to the governing body
5	Drinking Water Facility	88	Installation of more Water purifier will be considered
6	Washroom Cleanliness & Maintenance	92	Suggestions will be considered
7	Cafeteria	92	Infrastructure of Cafeteria will be considered for Modification
8	Library Facilities	84	E-Library has been introduced
9	Transportation	88	We will try to improve the quality of Transportation
10	Overall Maintenance & Environment of the Campus	88	Still Enhancement of the maintenance will be done

  
IQAC COORDINATOR



  
PRINCIPAL

PRINCIPAL  
BAPATLA WOMEN'S ENGINEERING COLLEGE  
BAPATLA

# Bapatla Women's Engineering College

BAPATLA-522101.Bapatla (Dist), A.P.

(Sponsored by The Bapatla Education Society)

Approved by AICTE-NewDelhi, Affiliated to Acharya Nagarjuna University

An ISO 9001:2015 Certified Institution

## Minutes of IQAC Meeting in the Academic Year 2022-2023

**Name of the stake holder: PARENT**

To bring the feedback analysis to their attention and ask if there was a chance for meaningful adjustments to be made to the college facilities, IQAC convened a meeting with all of the incharges and HoD's under the Head of the Institution. Parent feedback above 90% is considered positive feedback and below that is negative feedback and we are working for the environment.

S. No	Question	Percentage Consensus	Action to be Taken
1	Classrooms	80	Provision for E-learning has been included
2	Laboratories	88	Same to be continued but purchase of needed Equipments is considered
3	Wi-Fi and Internet Facilities	68	Suggestions are taken and speed of internet facility will be increased
4	Sports Facilities	80	Increasing the sports materials will be forwarded to the governing body
5	Drinking Water Facility	92	Installation of more Water purifier will be considered
6	Washroom Cleanliness & Maintenance	76	Suggestions will be considered
7	Cafeteria	84	Infrastructure of Cafeteria will be considered for Modification
8	Library Facilities	88	E-Library has been introduced
9	Transportation	80	We will try to improve the quality of Transportation
10	Overall Maintenance & Environment of the Campus	92	Still Enhancement of the maintenance will be done

*G. Hanthi*  
IQAC COORDINATOR



*J. Anam*  
PRINCIPAL

PRINCIPAL  
BAPATLA WOMEN'S ENGINEERING COLLEGE  
BAPATLA



(ESTD.2009)

# Bapatla Women's Engineering College

BAPATLA-522101.Bapatla (Dist), A.P.

(Sponsored by The Bapatla Education Society)

Approved by AICTE-NewDelhi, Affiliated to Acharya Nagarjuna University

An ISO 9001:2015 Certified Institution

## Minutes of IQAC Meeting in the Academic Year 2022-2023

Name of the stake holder: ALUMNI

To bring the feedback analysis to their attention and ask if there was a chance for meaningful adjustments to be made to the college facilities, IQAC convened a meeting with all of the incharges and HoD's under the Head of the Institution. Alumni feedback above 90% is considered positive feedback and below that is negative feedback and we are working for the environment.

S. No	Question	Percentage Consensus	Action to be Taken
1	Classrooms	88	Provision for E-learning has been included
2	Laboratories	88	Same to be continued but purchase of needed Equipments is considered
3	Wi-Fi and Internet Facilities	92	Suggestions are taken and speed of internet facility will be increased
4	Sports Facilities	84	Increasing the sports materials will be forwarded to the governing body
5	Drinking Water Facility	92	Installation of more Water purifier will be considered
6	Washroom Cleanliness & Maintenance	84	Suggestions will be considered
7	Cafeteria	96	Infrastructure of Cafeteria will be considered for Modification
8	Library Facilities	96	E-Library has been introduced
9	Transportation	76	We will try to improve the quality of Transportation
10	Overall Maintenance & Environment of the Campus	88	Still Enhancement of the maintenance will be done

  
IQAC COORDINATOR



  
PRINCIPAL

PRINCIPAL  
BAPATLA WOMEN'S ENGINEERING COLLEGE  
BAPATLA