



(ESTD. 2009)

Bapatla Women's Engineering College

BAPATLA -522101. Bapatla (Dist). A.P.

(Sponsored by The Bapatla Education Society)

Approved by AICTE-New Delhi. Affiliated to Acharya Nagarjuna University

An ISO 9001:2015 Certified Institution

DOCUMENT RELATED TO CLEAN AND GREEN CAMPUS INITIATIVES

1. ALTERNATIVE SOURCES OF ENERGY AND ENERGY CONSERVATION MEASURES

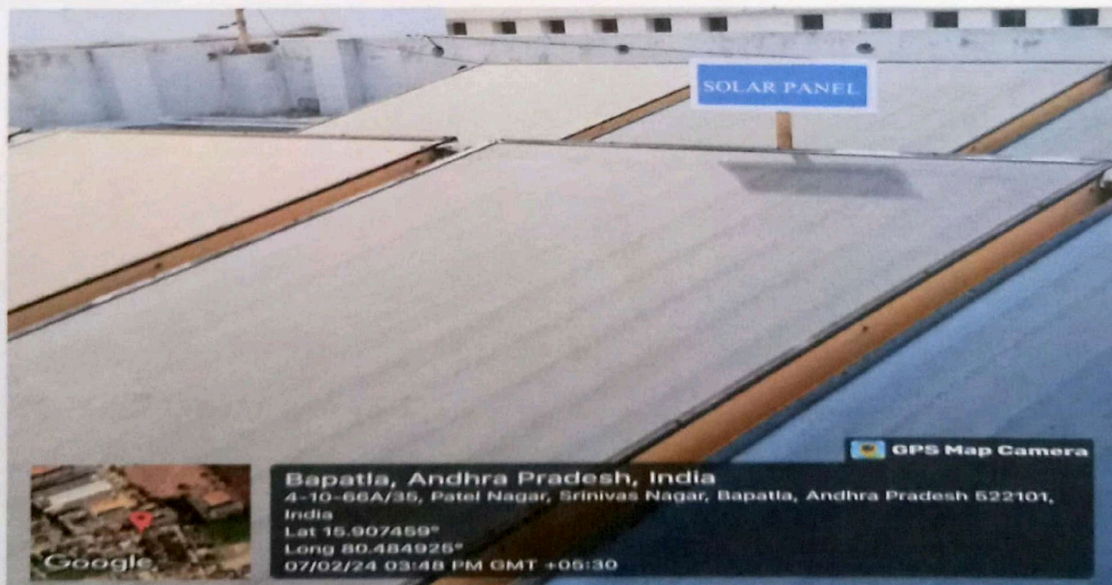
A. Solar Panels

Solar energy is an important alternative energy source that is produced from sunlight.

Photovoltaic energy offers many advantages, including

1. Being renewable in nature.
2. Helping to mitigate global warming.
3. Reducing reliance on fossil fuels.
4. Contributing to sustainable development.
5. Being non-polluting.
6. Managing energy imports.

The Institution has facilities for alternate sources of energy and energy-conservation measures. The energy is generated through the solar panels and the electricity consumption is met by these solar panels.



SOLAR PANEL



[Handwritten signature]

PRINCIPAL
BAPATLA WOMEN'S ENGINEERING COLLEGE
BAPATLA

Off: 08643 - 220922; Fax: 08643 - 220977; E-mail: bwecbapatla@gmail.com

(a) Solid Waste management

Solid waste management involves the systematic collection, treatment, and disposal of solid waste materials that have become no longer serve a purpose. The institution carefully monitors the efficient management of solid waste disposal on campus by strategically placing separate dust bins for dry and wet waste at various locations along the corridors and in washrooms.



BINS FOR WASTE MANAGEMENT

Regularly conducted awareness programs on solid waste management are organized to replenish the eco-friendly and green college campus. Various NSS programs such as Swachh Bharath, clean and green activities, and plantation initiatives are consistently carried out within the college premises.

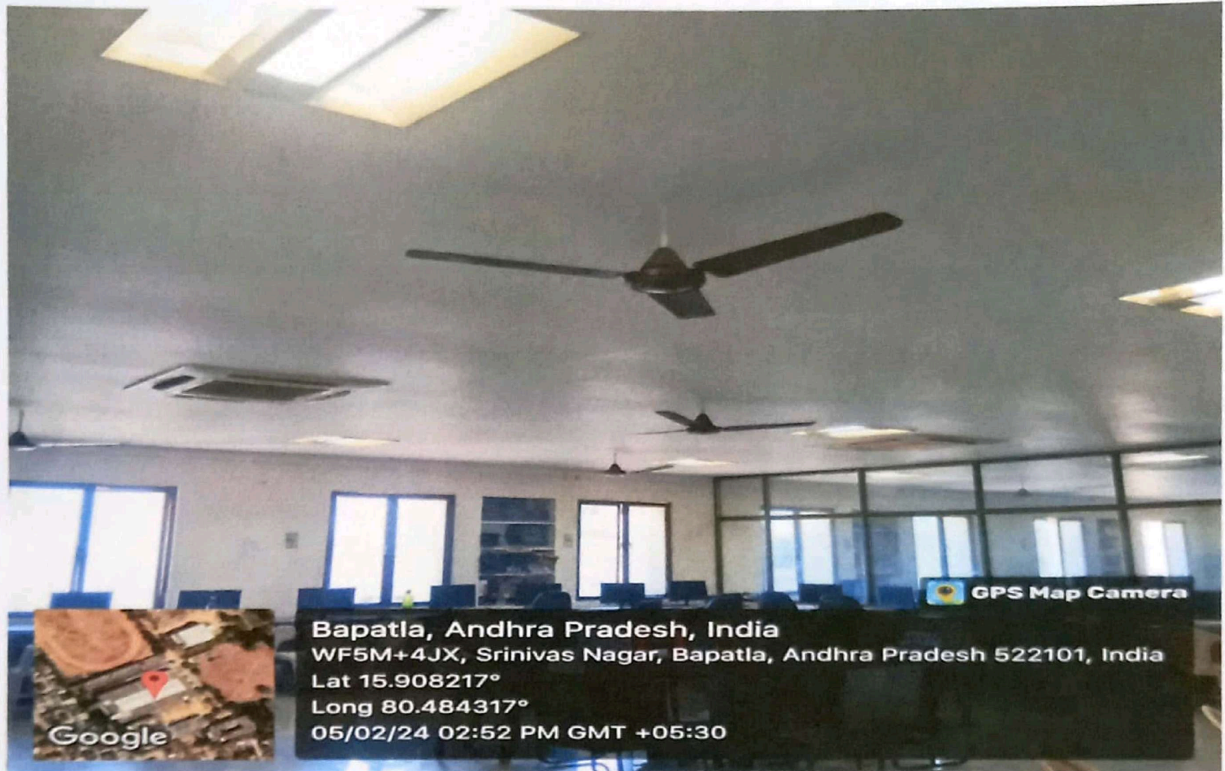


[Handwritten signature]

PRINCIPAL
BAPATLA WOMEN'S ENGINEERING COLLEGE
BAPATLA

B. LED Bulbs

The campus is equipped with facilities that promote energy efficiency. As part of energy-saving measures, traditional lights have been substituted with LED bulbs. LED lights are known for their energy efficiency, durability, and low heat emission. They consume significantly less energy compared to incandescent bulbs, have a lifespan up to 40 times longer, and provide high-quality light output.



LED BULBS

2. MANAGEMENT OF THE FOLLOWING TYPES OF DEGRADABLE AND NON DEGRADABLE WASTE

Our BWEC has taken several control measures in maintaining a clean and green campus and Eco- friendly policies such as

- (a) Solid Waste management.
- (b) Liquid Waste management.
- (c) E- waste management .



PRINCIPAL
BAPATLA WOMEN'S ENGINEERING COLLEGE
BAPATLA

(b) Liquid Waste management

It is a technique for preventing the discharge of pollutants into water ways by collecting and disposing of hazardous liquid items. The liquid waste is produced from scientific laboratories, hostels, and canteens. The institution directs wastewater from all laboratories into an underground conduit for proper disposal. The college transfers the liquid waste generated from laboratories to underground channels through a channelizer for appropriate disposal.



LIQUID WASTE MANAGEMENT



[Handwritten signature]

PRINCIPAL
BAPATLA WOMEN'S ENGINEERING COLLEGE
BAPATLA

3. WATER CONSERVATION FACILITIES AVAILABLE IN THE INSTITUTION

- a) Rain water harvesting.
- b) Bore well.
- c) Construction of tanks and bunds.
- d) Waste water recycling.
- e) Maintenance of water bodies and distribution system in the campus.



RAIN WATER HARVESTING



[Handwritten signature]

PRINCIPAL
BAPATLA WOMEN'S ENGINEERING COLLEGE
BAPATLA

(c) e- waste Management

waste management involves the proper disposal and management of electronic waste, which includes outdated or discarded electronic devices like phones, computers, and televisions. "DURGA ENTERPRISES" is responsible for collecting obsolete electronic equipment such as computer monitors, CPU's, and other e-waste.



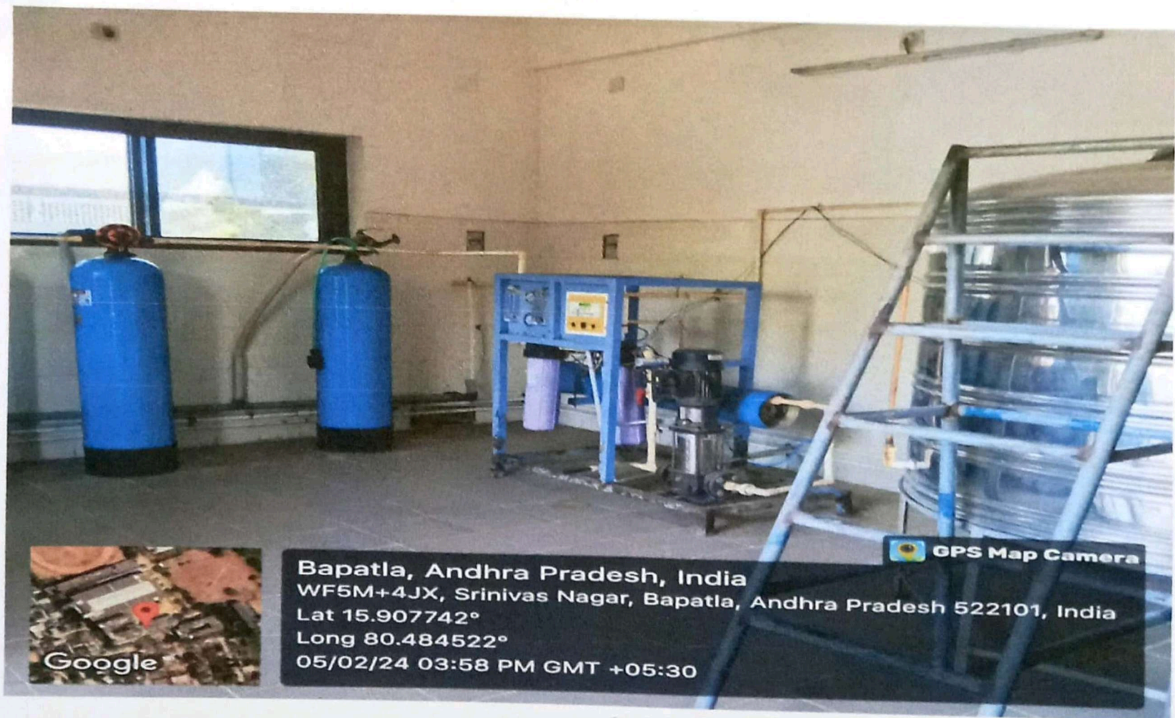
e-WASTE MANAGEMENT



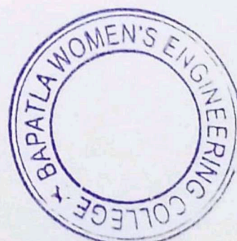
PRINCIPAL
BAPATLA WOMEN'S ENGINEERING COLLEGE
BAPATLA



BORE WELL



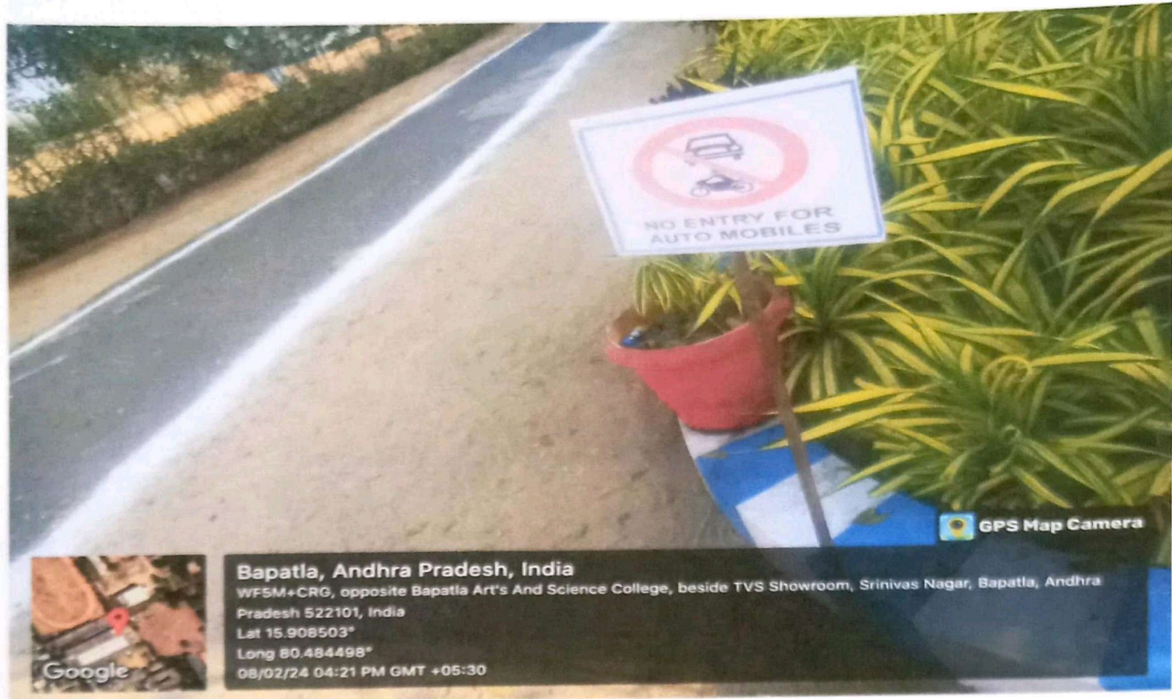
R.O. PLANT



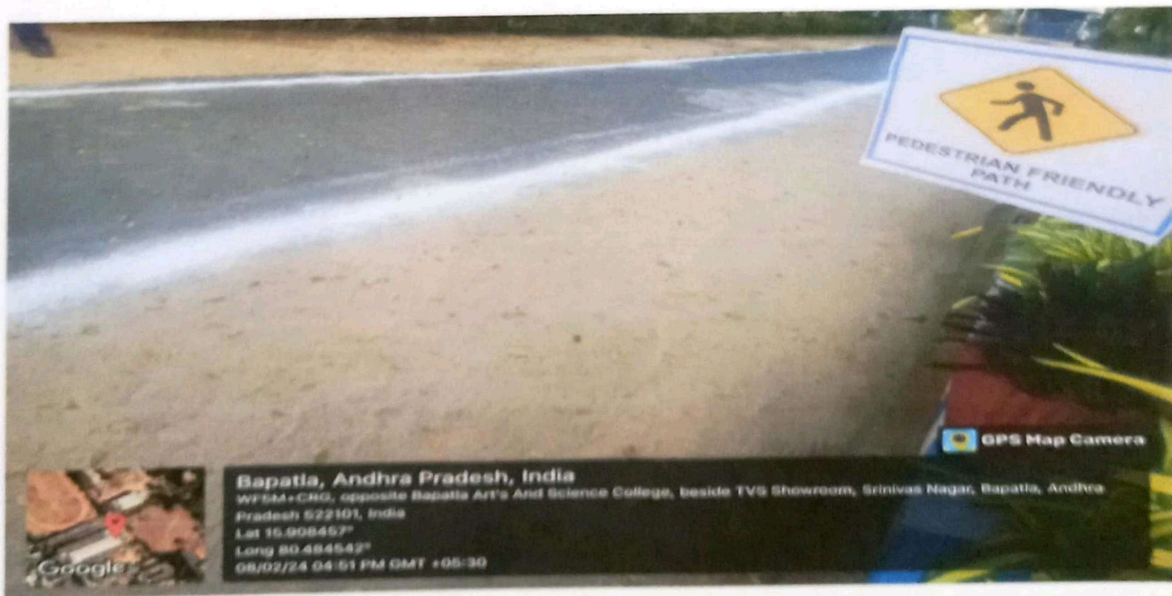
PRINCIPAL
BAPATLA WOMEN'S ENGINEERING COLLEGE
BAPATLA

4. GREEN CAMPUS INITIATIVES ARE AS FOLLOWS:

- a) Restricted entry of automobiles.
- b) Pedestrians friendly pathway.
- c) Landscaping with trees and plants.



RESTRICTED ENTRY OF AUTOMOBILES



PEDESTRIANS FRIENDLY PATHWAY

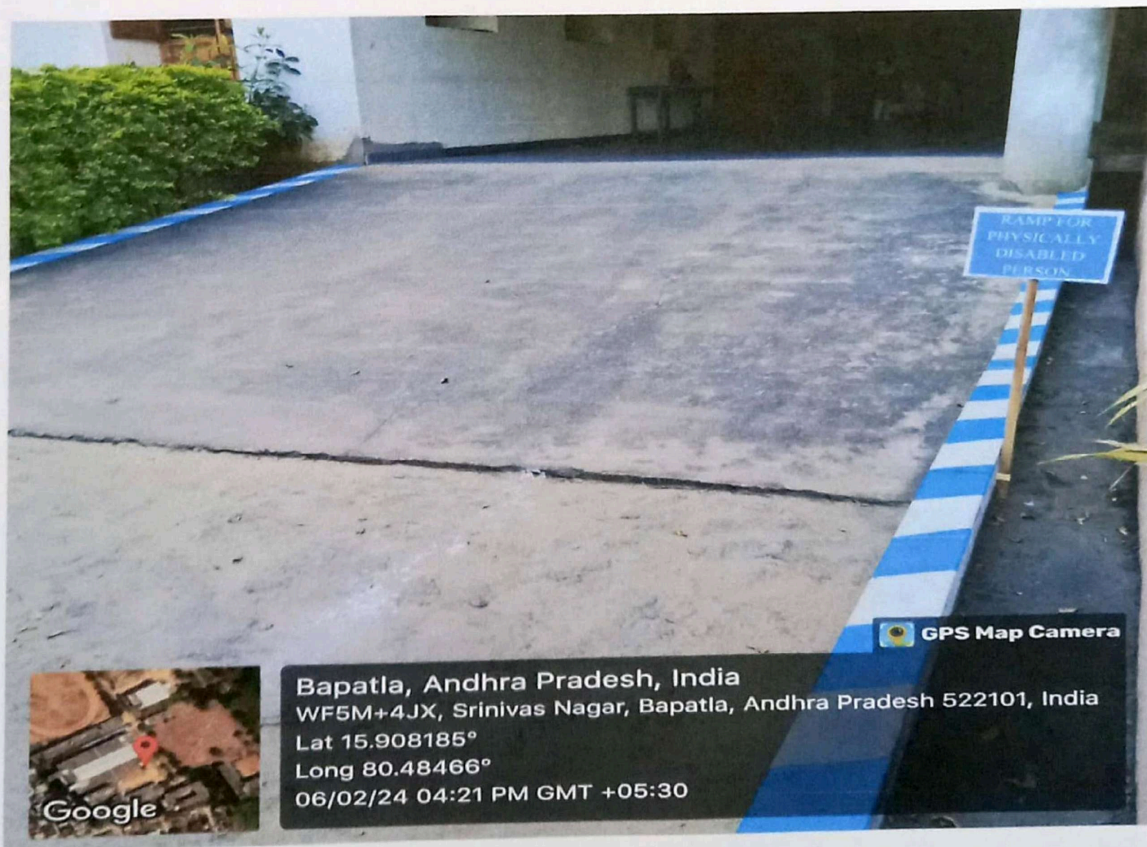


PRINCIPAL
BAPATLA WOMEN'S ENGINEERING COLLEGE
BAPATLA

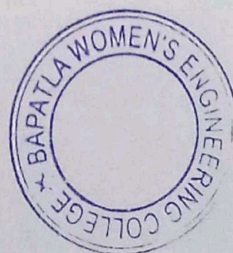
The Institution has disabled friendly, barrier free Environment

- a) Create a conducive environment for convenient classroom access.
- b) Disabled friendly washrooms.
- c) incorporate symbols and signs such as pathways, lights, display boards, and signage.
- d) Provide facilities for individuals with disabilities, including an accessible website, screen reading software, and mechanized equipment.
- e) Ensure provision for inquiry and information readers, scribes, and soft copies of reading materials.

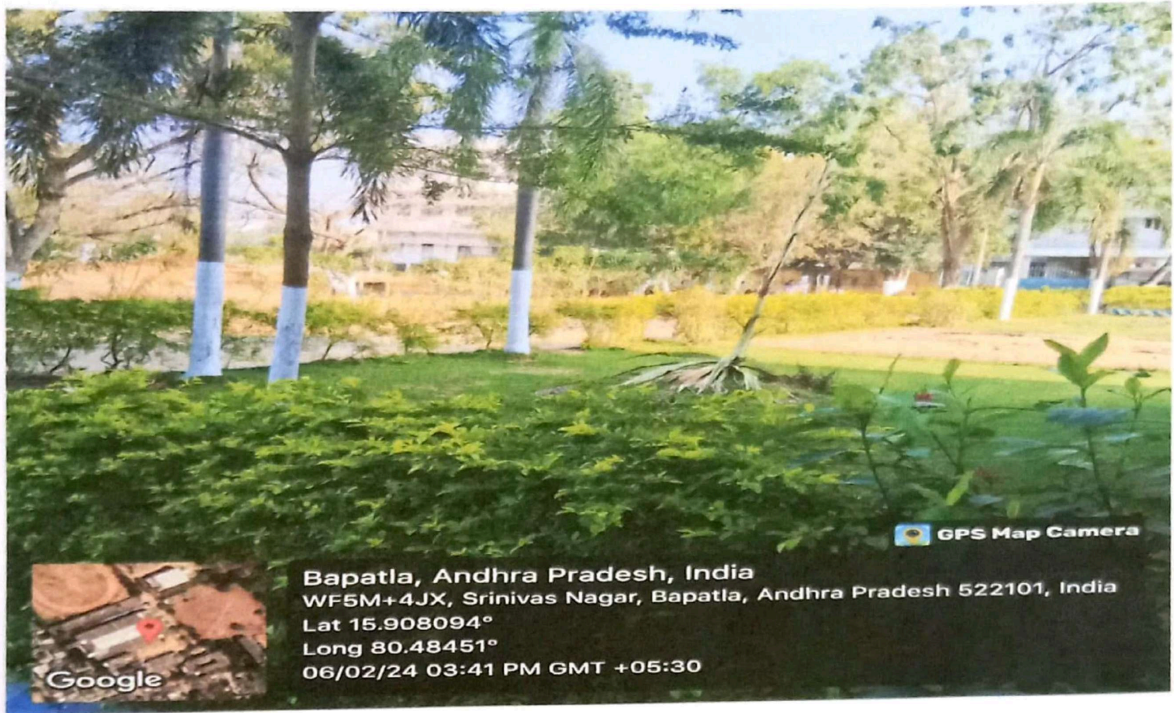
The college strives to create disabled-friendly facilities, which include accessible entrances and exits with ramps and sloped pathways. Additionally, accessible restrooms are well-maintained.



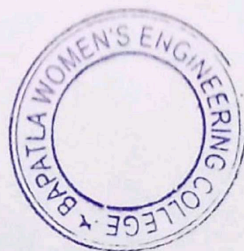
RAMP FOR PHYSICALLY DISABLED PERSON



PRINCIPAL
BAPATLA WOMEN'S ENGINEERING COLLEGE
BAPATLA



LANDSCAPPING WITH TREES AND PLANTS



Handwritten signature

PRINCIPAL
 BAPATLA WOMEN'S ENGINEERING COLLEGE
 BAPATLA



TOILETS FOR DISABLED PERSONS



WHEEL CHAIR FOR DISABLED PERSONS



[Handwritten signature]

PRINCIPAL
BAPATLA WOMEN'S ENGINEERING COLLEGE
BAPATLA